



**FEATURED PRODUCT**  
FATBOY PLUG See page 2

# Product Catalog

855-758-4489 | [www.plugtechinc.com](http://www.plugtechinc.com)

# What's New!

## 24"-60" FatBoy™ Tester™, Plugster™, and Guzzler with Max-Guard™ Relief Valve and Optional Max-Sleeve™

Back Pressure:  
9 PSI or 20 Feet  
of Head.

30% Higher Than the  
Competition!

Rated for 61.5"  
Diameter Pipe.

20.5"  
deflated  
diameter  
allows the  
plug to be  
simply  
lowered  
through any  
24" manhole  
opening.



Description	Part #	Size Usage Range		Maximum Allowable Back Pressure PSI and Feet of Head	Required Inflation Pressure	Weight	Deflated Diameter	Deflated Length	Inflation Fittings	Eye Bolt Size & Quantity	Bypass Size
		Minimum Diameter	Maximum Diameter								
24"-60" FatBoy Plugster™ With Max-Guard™ (relief valve)	200-2460MG	21"	61.5"	9 PSI 20 FT	25 PSI	175 lbs	20.5"	95"	(1) 1/4" QD Nipple (removable) (1) 1/2" NTP (F)	(2) 1/2" Eyebolts (2) 1/2" Optional Backside	None
24"-60" FatBoy Plugster™ With Max-Guard™ (relief valve) and Max-Sleeve™ Installed	200-2460 MGMS	21"	61.5"	9 PSI 20 FT	25 PSI	240 lbs	21"	95"	(1) 1/4" QD Nipple (removable) (1) 1/2" NTP (F)	(2) 1/2" Eyebolts (2) 1/2" Optional Backside	None
24"-60" FatBoy Tester™ With Max-Guard™ (relief valve)	225-2460MG	21"	61.5"	9 PSI 20 FT	25 PSI	180 lbs	20.5"	95"	(1) 1/4" QD Nipple (removable) (1) 1/2" NTP (F)	(2) 1/2" Eyebolts (2) 1/2" Optional Backside	3/4" and 1/4" (f) NPT
24"-60" FatBoy Tester™ With Max-Guard™ (relief valve) and Max-Sleeve™ Installed	225-2460 MGMS	21"	61.5"	9 PSI 20 FT	25 PSI	245 lbs	21"	95"	(1) 1/4" QD Nipple (removable) (1) 1/2" NTP (F)	(2) 1/2" Eyebolts (2) 1/2" Optional Backside	3/4" and 1/4" (f) NPT
24"-60" FatBoy Guzzler™ With 4" Bypass and Max-Guard™ (relief valve)	250-2460MG	21"	61.5"	9 PSI 20 FT	25 PSI	200 lbs	20.5"	95"	(1) 1/4" QD Nipple (removable) (1) 1/2" NTP (F)	(2) 1/2" Eyebolts (2) 1/2" Optional Backside	4" (m) NPT
24"-60" FatBoy Guzzler™ With 4" Bypass and Max-Guard™ (relief valve) and Max-Sleeve™ Installed	250-2460 MGMS	21"	61.5"	9 PSI 20 FT	25 PSI	265 lbs	21"	95"	(1) 1/4" QD Nipple (removable) (1) 1/2" NTP (F)	(2) 1/2" Eyebolts (2) 1/2" Optional Backside	4" (m) NPT
24"-60" FatBoy Guzzler™ With 6" Bypass and Max-Guard™ (relief valve)	276-2460MG	21"	61.5"	9 PSI 20 FT	25 PSI	215 lbs	20.5"	95"	(1) 1/4" QD Nipple (removable) (1) 1/2" NTP (F)	(2) 1/2" Eyebolts (2) 1/2" Optional Backside	6" (m) NPT
24"-60" FatBoy Guzzler™ With 6" Bypass and Max-Guard™ (relief valve) and Max-Sleeve™ Installed	276-2460 MGMS	21"	61.5"	9 PSI 20 FT	25 PSI	270 lbs	21"	95"	(1) 1/4" QD Nipple (removable) (1) 1/2" NTP (F)	(2) 1/2" Eyebolts (2) 1/2" Optional Backside	6" (m) NPT



# What's New!

## 4"-8" Plugster™ and 6"-12" FatBoy™ Plugster™ and Tester™ Plugs

Description	Part #	Size Usage Range		Maximum Allowable Back Pressure PSI and Head	Required Inflation Pressure	Weight	Deflated Diameter	Deflated Length	Inflation Fitting	Eye Bolt Size & Quantity	Bypass
		Minimum Diameter	Maximum Diameter								
4" - 8" FatBoy Plugster™	200-48	3.75" 100mm	8.3" 210mm	15 PSI 35 Ft	45 PSI	2.5 lbs	3.5"	16"	1/8" QD Nipple and Tank Valve (removable)	(1) 1/4" Frontside	N/A
6"-12" FatBoy Plugster™	200-612	5.5" 150mm	12.30" 310mm	11 PSI 25 FT	35 PSI	6 lbs	5.2"	23"	1/4" QD Nipple (removable)	(1) 3/8" Frontside (1) 3/8" Optional Backside	N/A
6"-12" FatBoy Tester™	225-612	5.5" 150mm	12.30" 310mm	11 PSI 25 FT	30 PSI	10 lbs	5.25"	27"	1/4" QD Nipple (removable)	(1) 3/8" Frontside (1) 3/8" Optional Backside	(1) 3/4" Flexible (1) 1/4" Flexible



## 12"-18" and 12"-24" FatBoy Plugsters and Testers now with Optional Max-Guard™ (relief valve)



**Max-Guard™ (relief valve) helps protect your plug from over inflation caused by operator error or malfunctioning gauge.**

Description	Part #	Size Usage Range		Maximum Allowable Back Pressure PSI and Feet of Head	Required Inflation Pressure	Weight	Deflated Diameter	Deflated Length	Inflation Fitting	Eye Bolt Size & Quantity	Bypass Size (s) NPT
		Minimum Diameter	Maximum Diameter								
12"-18" FatBoy Plugster™ With Max-Guard™ (relief valve)	200-1218MG	11" 300mm	18.5" 450mm	13 PSI 30 Ft	25 PSI	31 lbs	10.75"	28"	1/4" Quick Disconnect Nipple (removable)	(2) (3/8") Frontside (1) (3/8") Backside Eyebolt Optional	No Bypass
12"-18" FatBoy Plugster™ With Max-Guard™ (relief valve) Max-Sleeve™ Installed	200-1218 MGMS	11" 300mm	18.5" 450mm	13 PSI 30 Ft	25 PSI	31 lbs	10.75"	28"	1/4" Quick Disconnect Nipple (removable)	(2) (3/8") Frontside (1) (3/8") Backside Eyebolt Optional	No Bypass
12"-18" FatBoy Tester™ With Max-Guard™ (relief valve)	225-1218MG	11" 300mm	18.5" 450mm	13 PSI 30 Ft	25 PSI	31 lbs	10.75"	28"	1/4" Quick Disconnect Nipple (removable)	(1) (3/8") Frontside (1) (3/8") Backside Eyebolt Optional	3/4" and 1/4"
12"-18" FatBoy Tester™ With Max-Guard™ (relief valve) Max-Sleeve™ Installed	225-1218 MGMS	11" 300mm	18.5" 450mm	13 PSI 30 Ft	25 PSI	31 lbs	10.75"	28"	1/4" Quick Disconnect Nipple (removable)	(1) (3/8") Frontside (1) (3/8") Backside Eyebolt Optional	3/4" and 1/4"
12"-24" FatBoy Plugster™ With Max-Guard™ (relief valve)	200-1224MG	11" 300mm	24.5" 600mm	13 PSI 30 Ft	30 PSI	28 lbs	10.75"	37"	1/4" Quick Disconnect Nipple (removable)	(1) (3/8") Frontside (1) (3/8") Backside Eyebolt Optional	No Bypass
12"-24" FatBoy Plugster™ With Max-Guard™ (relief valve) Max-Sleeve™ Installed	200-1224 MGMS	11" 300mm	24.5" 600mm	13 PSI 30 Ft	30 PSI	41 lbs	10.75"	37"	1/4" Quick Disconnect Nipple (removable)	(1) (3/8") Frontside (1) (3/8") Backside Eyebolt Optional	No Bypass
12"-24" FatBoy Tester™ With Max-Guard™ (relief valve)	225-1224MG	11" 300mm	24.5" 600mm	13 PSI 30 Ft	30 PSI	37 lbs	10.75"	37"	1/4" Quick Disconnect Nipple (removable)	(1) (3/8") Frontside (1) (3/8") Backside Eyebolt Optional	3/4" and 1/4"
12"-24" FatBoy Tester™ With Max-Guard™ (relief valve) Max-Sleeve™ Installed	225-1224 MGMS	11" 300mm	24.5" 600mm	13 PSI 30 Ft	30 PSI	50 lbs	10.75"	37"	1/4" Quick Disconnect Nipple (removable)	(1) (3/8") Frontside (1) (3/8") Backside Eyebolt Optional	3/4" and 1/4"

## Max-HD Fill Kits with New Bend Resistant Sleeve

### Bend Restrictor



### New and Improved HD Fill Kits

Now with a new bend restrictor on the hose (plug inflation end). Improves the hoses durability by preventing the hose from bending at the fitting.

Size and PN's on Page 22



PN: 450-20

# Single Size FatBoy Plugster™

Our Single Size Plugsters™ are our most economical blocking plugs.

Our Single Size Plugsters™ can be used in a variety of different applications including blocking flow, vacuum testing and air testing (backside only).

As single size plugs our Plugsters™ have a size range that covers one nominal pipe size, including 6", 8", 10", and 12" pipes.

Plugsters™ are made from high quality natural rubber making them very durable and long lasting.

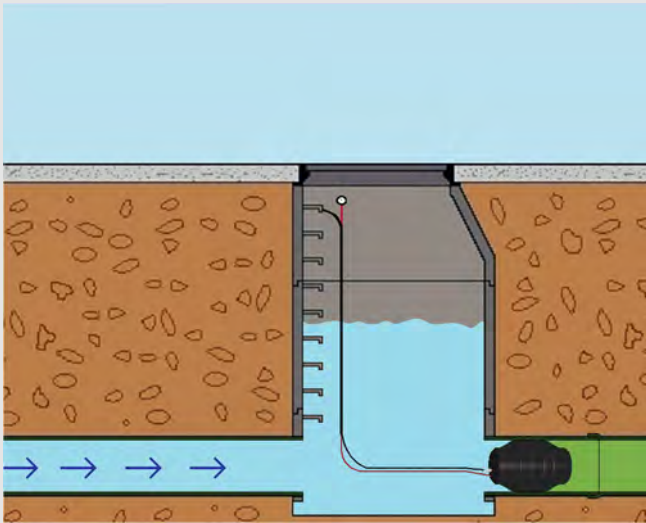
Plugsters™ have either a 1/4" or 3/8" eyebolt for lifting and lowering the plug.



## Recommended Applications:

blocking flow, vacuum testing, air testing (back side only).

**Caution: Always block plugs when conducting air tests!**



## Recommended Accessories:

Part Number:  
**410-20**

20' Fill Kit/  
Retrieval Rope  
with swivel Ball  
connection no  
gauge connected  
to 100-08.



Size Usage Range											
Description	Part #	Minimum Diameter	Maximum Diameter	Maximum Allowable Back Pressure PSI and Feet of Head	Required Inflation Pressure	Weight	Deflated Diameter	Deflated Length	Inflation Fitting	Eye Bolts Size & Quantity	Bypass Size (s)
6" FatBoy Plugster™	100-06	5" 127mm	6.4" 162mm	15 PSI 34 FT	25 PSI	2.5 Lbs	4.75"	6"	1/8" Tank Valve	(1) 1/4"	None
8" FatBoy Plugster™	100-08	6.75" 171mm	8.55" 217mm	15 PSI 34 FT	25 PSI	5 Lbs	6.5"	8"	1/4" Tank Valve	(1) 3/8"	None
10" FatBoy Plugster™	100-10	8.75" 222mm	10.58" 268mm	15 PSI 34 FT	25 PSI	8 Lbs	8.5"	10"	1/4" Tank Valve	(1) 3/8"	None
12" FatBoy Plugster™	100-12	10.75" 273mm	12.64" 321mm	15 PSI 34 FT	25 PSI	12 Lbs	10.5"	12"	1/4" Tank Valve	(1) 3/8"	None

# Multi-Size FatBoy Plugsters™

Our innovative manufacturing process allows our 15"-30" and larger plugs to be vulcanized in one cure. This process also allows the use of high strength cording throughout the plug and around each end of the plug to ensure maximum strength and durability.

Our durable Multisize FatBoy Plugsters™ work in any pipe that falls inside the plug's size usage range and are now available in **24"-60" usage range.**

Our Multisize Plugsters™ are ideal for rental customers because each plug will cover several different pipe sizes which allows better utilization of the asset.

Our Multisize Plugsters™ are designed specifically for either blocking flow or holding air/vacuum pressure.

Our Multisize Plugsters™ are the most economical multi-size plugs in the industry and are great for contractors or municipalities that are working with different diameter pipes but do not need air testing capabilities.

Our Multisize Plugsters™ natural rubber construction maximizes the flexibility of our plugs in order to bend the plugs at a 90 degree angle which allows for easy installation.

Removable/replaceable 1/4" QD nipples are standard on all Fatboy Plugsters™ 6"-10" and larger while plugs smaller include both 1/8" QD nipples and 1/8" tank valve.

Optional Max-Guard™ (relief valve) on 12"-18" plugs and larger protects the plug from being over inflated due to operator error or malfunctioning gauges.



Pictured: 440-30

Pictured: 450-20

Recommended Optional Accessories:

Fill Kits/Retrieval Rope with Gauge  
(see page 22 and 23).

Max-Sleeves™ Available for plugs 12"-18" and larger (see page 12).



Pictured:  
600-1224



Pictured:  
200-1530MG



**Recommended Applications:**  
Plugsters™ are designed for blocking flow, air test (back side) and vacuum testing.

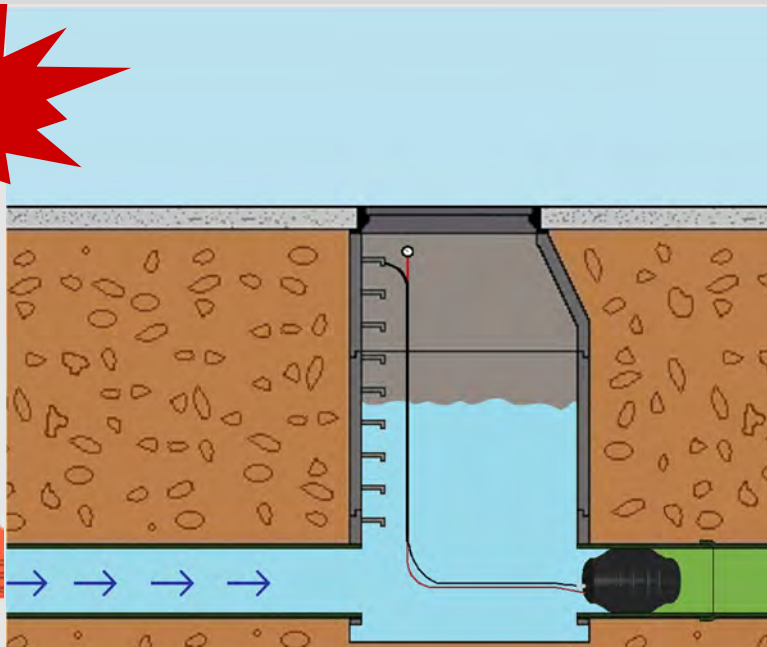
**Caution: Always block plugs when conducting air tests!**

# Multi-Size FatBoy Plugster™

	Description	Part #	Size Usage Range		Maximum Allowable		Weight	Deflated Diameter	Deflated Length	Inflation Fitting	Eye Bolt Size & Quantity
			Minimum Diameter	Maximum Diameter	Back Pressure PSI and Feet of Head	Required Inflation Pressure					
	3-4" FatBoy Plugster™	200-34	2.9" 75 mm	4.3" 109 mm	20 PSI 46 Ft	35 PSI	0.66 lbs	2.75"	6"	1/8" QD Nipple and Tank Valve (removable)	(1) 1/4" Frontside
	4"- 6" FatBoy Plugster™	200-46	3.75" 100 mm	6.4" 162 mm	17 PSI 39 Ft	45 PSI	1.5 lbs	3.5"	9"	1/8" QD Nipple and Tank Valve (removable)	(1) 1/4" Frontside
<b>New Size!</b>	4"- 8" FatBoy Plugster™	200-48	3.75" 100 mm	8.3" 210 mm	15 PSI 35 Ft	45 PSI	2.5 lbs	3.5"	16"	1/8" QD Nipple and Tank Valve (removable)	(1) 1/4" Frontside
	6"-10" FatBoy Plugster™	200-610	5.5" 150 mm	10.58" 268 mm	13 PSI 30 Ft	30 PSI	4.5 lbs	5.2"	17.25"	1/4" QD Nipple (removable)	(1) 3/8" Frontside (1) 3/8" Optional Backside
<b>New Size!</b>	6"-12" FatBoy Plugster™	200-612	5.5" 150 mm	12.30" 310 mm	11 PSI 25 Ft	35 PSI	6 lbs	5.2"	23"	1/4" QD Nipple (removable)	(1) 3/8" Frontside (1) 3/8" Optional Backside
	8"-12" FatBoy Plugster™	200-812	7" 200 mm	12.64" 321 mm	13 PSI 30 Ft	25 PSI	6.75 lbs	6.75"	19"	1/4" QD Nipple (removable)	(1) 3/8" Frontside (1) 3/8" Optional Backside
	12"-18" FatBoy Plugster™	200-1218	11" 200 mm	18.50" 479 mm	13 PSI 30 Ft	25 PSI	24 lbs	10.75"	28"	1/4" QD Nipple (removable)	(2) 3/8" Frontside (1) 3/8" Optional Backside
	12"-18" FatBoy Plugster™ with Max-Sleeve™ Installed	200-1218MS	11" 200 mm	18.50" 479 mm	13 PSI 30 Ft	25 PSI	35 lbs	10.75"	28"	1/4" QD Nipple (removable)	(2) 3/8" Frontside (1) 3/8" Optional Backside
<b>New Optional Relief Valve!</b>	12"-18" FatBoy Plugster™ With Max-Guard™ (relief valve)	200-1218MG	11" 200 mm	18.50" 479 mm	13 PSI 30 Ft	25 PSI	24 lbs	10.75"	28"	1/4" QD Nipple (removable)	(1) 3/8" Frontside (1) 3/8" Optional Backside
<b>New Optional Relief Valve!</b>	12"-18" FatBoy Plugster™ With Max-Guard™ (relief valve) Max-Sleeve™ Installed	200-1218 MGMS	11" 200 mm	18.50" 479 mm	13 PSI 30 Ft	25 PSI	35 lbs	10.75"	28"	1/4" QD Nipple (removable)	(1) 3/8" Frontside (1) 3/8" Optional Backside
	12"-24" FatBoy Plugster™	200-1224	11" 300 mm	24.5" 600 mm	13 PSI 30 Ft	30 PSI	27 lbs	10.75"	37"	1/4" QD Nipple (removable)	(2) 3/8" Frontside (1) 3/8" Optional Backside
	12"-24" FatBoy Plugster™ with Max-Sleeve™ Installed	200-1224MS	11" 300 mm	24.5" 600 mm	13 PSI 30 Ft	30 PSI	40 lbs	10.75"	37"	1/4" QD Nipple (removable)	(2) 3/8" Frontside (1) 3/8" Optional Backside
<b>New Optional Relief Valve!</b>	12"-24" FatBoy Plugster™ With Max-Guard™ (relief valve)	200-1224MG	11" 300 mm	24.5" 600 mm	13 PSI 30 Ft	30 PSI	28 lbs	10.75"	37"	1/4" QD Nipple (removable)	(1) 3/8" Frontside (1) 3/8" Optional Backside
<b>New Optional Relief Valve!</b>	12"-24" FatBoy Plugster™ With Max-Guard™ (relief valve) Max-Sleeve™ Installed	200-1224 MGMS	11" 300 mm	24.5" 600 mm	13 PSI 30 Ft	30 PSI	41 lbs	10.75"	37"	1/4" QD Nipple (removable)	(1) 3/8" Frontside (1) 3/8" Optional Backside



PN 200-48 and 200-612



# Multi-Size FatBoy Plugster™

	Description	Part #	Size Usage Range		Maximum Allowable		Weight	Deflated Diameter	Deflated Length	Inflation Fitting	Eye Bolt Size & Quantity
			Minimum Diameter	Maximum Diameter	Back Pressure PSI and Feet of Head	Required Inflation Pressure					
	15"-30" FatBoy Plugster™	200-1530	14" 375 mm	31.5" 800 mm	11 PSI 25 Ft	25 PSI	50 lbs	13.75"	50"	(1) 1/4" QD Nipple (removable) (1) 1/2" NTP (female) (plugged)	(2) 1/2" Frontside (2) 1/2" Optional Backside
	15"-30" FatBoy Plugster™ With Max-Guard™ (relief valve)	200-1530MG	14" 375 mm	31.5" 800 mm	11 PSI 25 Ft	25 PSI	50 lbs	13.75"	50"	(1) 1/4" QD Nipple (removable) (1) 1/2" NTP (female) (plugged)	(2) 1/2" Frontside (2) 1/2" Optional Backside
	15"-30" FatBoy Plugster™ With Max-Sleeve™ Installed	200-1530MS	14" 375 mm	31.5" 800 mm	11 PSI 25 Ft	25 PSI	71 lbs	13.75"	50"	(1) 1/4" QD Nipple (removable) (1) 1/2" NTP (female) (plugged)	(2) 1/2" Frontside (2) 1/2" Optional Backside
	15"-30" FatBoy Plugster™ With Max-Guard™ (relief valve) and Max-Sleeve™ Installed	200-1530 MGMS	14" 375 mm	31.5" 800 mm	11 PSI 25 Ft	25 PSI	71 lbs	13.75"	50"	(1) 1/4" QD Nipple (removable) (1) 1/2" NTP (female) (plugged)	(2) 1/2" Frontside (2) 1/2" Optional Backside
	18"-36" FatBoy Plugster	200-1836	16.5" 420 mm	37.5" 950 mm	11 PSI 25 Ft	25 PSI	68 lbs	16"	60"	(1) 1/4" QD Nipple (removable) (1) 1/2" NTP (female) (plugged)	(2) 1/2" Frontside (2) 1/2" Optional Backside
	18"-36" FatBoy Plugster™ With Max-Guard™ (relief valve)	200-1836MG	16.5" 420 mm	37.5" 950 mm	11 PSI 25 Ft	25 PSI	68 lbs	16"	60"	(1) 1/4" QD Nipple (removable) (1) 1/2" NTP (female) (plugged)	(2) 1/2" Frontside (2) 1/2" Optional Backside
	18"-36" FatBoy Plugster™ With Max-Sleeve™ Installed	200-1836MS	16.5" 420 mm	37.5" 950 mm	11 PSI 25 Ft	25 PSI	95 lbs	16"	60"	(1) 1/4" QD Nipple (removable) (1) 1/2" NTP (female) (plugged)	(2) 1/2" Frontside (2) 1/2" Optional Backside
	18"-36" FatBoy Plugster™ With Max-Guard™ (relief valve) and Max-Sleeve™ Installed	200-1836 MGMS	16.5" 420 mm	37.5" 950 mm	11 PSI 25 Ft	25 PSI	95 lbs	16"	60"	(1) 1/4" QD Nipple (removable) (1) 1/2" NTP (female) (plugged)	(2) 1/2" Frontside (2) 1/2" Optional Backside
	24"-48" FatBoy Plugster™	200-2448	22" 610 mm	49.5" 1,220 mm	11 PSI 25 Ft	25 PSI	120 lbs	21"	76"	(1) 1/4" QD Nipple (removable) (1) 1/2" NTP (female) (plugged)	(2) 1/2" Frontside (2) 1/2" Optional Backside
	24"-48" FatBoy Plugster™ With Max-Guard™ (relief valve)	200-2448MG	22" 610 mm	49.5" 1,220 mm	11 PSI 25 Ft	25 PSI	120 lbs	21"	76"	(1) 1/4" QD Nipple (removable) (1) 1/2" NTP (female) (plugged)	(2) 1/2" Frontside (2) 1/2" Optional Backside
	24"-48" FatBoy Plugster™ With Max-Sleeve™ Installed	200-2448MS	22" 610 mm	49.5" 1,220 mm	11 PSI 25 Ft	25 PSI	170 lbs	21"	76"	(1) 1/4" QD Nipple (removable) (1) 1/2" NTP (female) (plugged)	(2) 1/2" Frontside (2) 1/2" Optional Backside
	24"-48" FatBoy Plugster™ With Max-Guard™ (relief valve) and Max-Sleeve™ Installed	200-2448 MGMS	22" 610 mm	49.5" 1,220 mm	11 PSI 25 Ft	25 PSI	170 lbs	21"	76"	(1) 1/4" QD Nipple (removable) (1) 1/2" NTP (female) (plugged)	(2) 1/2" Frontside (2) 1/2" Optional Backside
<b>New Size!</b>	24"-60" FatBoy Plugster™ With Max-Guard™ (relief valve)	200-2460MG	21" 550 mm	61.5" 1550 mm	9 PSI 20 Ft	25 PSI	175 lbs	20.5"	95"	(1) 1/4" QD Nipple (removable) (1) 1/2" NTP (female) (plugged)	(2) 1/2" Frontside (2) 1/2" Optional Backside
<b>New Size!</b>	24"-60" FatBoy Plugster™ With Max-Guard™ (relief valve) and Max-Sleeve™ Installed	200-2460 MGMS	21" 550 mm	61.5" 1550 mm	9 PSI 20 Ft	25 PSI	240 lbs	21"	95"	(1) 1/4" QD Nipple (removable) (1) 1/2" NTP (female) (plugged)	(2) 1/2" Frontside (2) 1/2" Optional Backside

**PN 200-2460MG**



- All size plugs are designed to fit through 24" manhole openings.
- 1/4" and 1/2" inflation ports (f) NPT for all plugs 15"-30" and larger.
- Optional Max-Guard™ for all plugs 12"-18" and larger.
- Optional Max-Sleeves™ for all plugs 12"-18" and larger.
- Natural rubber construction gives our plugs the flexibility to bend past 90 degrees making installation painless.

# Multi-Size FatBoy Guzzler™ and Max-Guzzlers™

Our Max-Guzzlers™ are specifically designed for bypassing flow. The male nipple with npt threads make connecting our plugs to the bypass hoses trouble-free.

**Recommended Application: 250 Series:** Bypassing flow, gravity bypassing, air testing (test through and blocking), vacuum testing.

**Recommended Application: 27\_ Series:** Bypassing flow (pumping) and gravity bypassing (not recommended for air testing).

**Recommended Application: 26\_ Series:** Gravity bypassing (not recommended for air testing).

Our lightweight aluminum bypasses tubes (all plugs 12"-24" and smaller) make our Guzzler™ and Max-Guzzler™ plugs lightweight and easy to install.

**8"-12" Guzzler™ plug** includes a 3" plug installed in the bypass with 1/2" and 1/4" air test ports which allow the plug to be used for air testing without purchasing an extra conversion plug.

**Optional Max-Guard™ on 12"-18" and larger plugs.** The Max-Guard™ relief valve helps prevent the plug from being over inflated due to operator error or malfunctioning gauges.

## Hose Accessories

Description	Part #	Length
4" Max-Flow Hose Assembly 5' length (includes (2) 4" Clamps)	910-04	5'
6" Max-Flow Hose Assembly 5' length includes (2) 6" Clamps)	910-06	5'
4" ABS Hose Splice (used to join two sections of hose together) (4" clamps sold separately)	50-022	
4" ABS "T" Fitting (used to connect three hoses in a "T" shaped configuration) (4" clamps sold separately)	50-020	
4" ABS "Y" Fitting (used to connect three hoses in a Y shaped configuration) (4" clamps sold separately)	50-021	
4" Hose Clamp	31-030	
6" Hose Clamp	31-031	



PN: 910-04



PN: 50-020



PN: 50-022



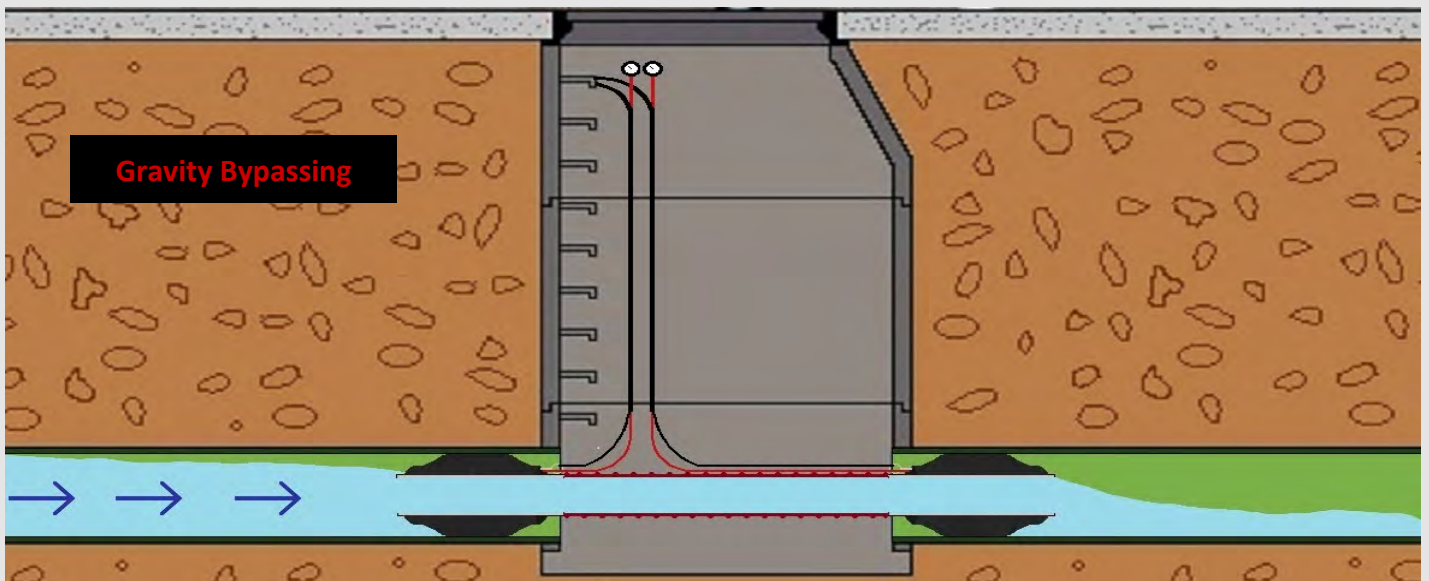
PN: 50-021



PN: 31-030



PN: 264-068 connected to 910-04 connected to 264-812



Gravity Bypassing

# Multi-Size FatBoy Guzzlers™ and Max-Guzzlers™

Description	Part #	Size Usage Range		Maximum Allowable Back Pressure PSI and Feet of Head	Required Inflation Pressure	Weight	Deflated Diameter	Deflated Length	Inflation Fitting	Eye Bolt Size & Quantity	Bypass Size (connection)
		Minimum Diameter	Maximum Diameter								
3"-4" FatBoy Guzzler™ Aluminum Threaded Bypass with 1/4" Female NPT Connection	250-34	2.75" 70 mm	4.3" 109 mm	20 PSI 46 Ft	35 PSI	.75 LBS	2.65"	6.25"	1/8" Tank Valve (removable) and QD Nipple	(1) 1/4" Eyebolt Frontside	1/4" NPT (female) Threaded
4" -6" FatBoy Guzzler™ Aluminum Threaded Bypass with 3/4" Female NPT Connection	250-46	3.75" 95 mm	6.4" 162 mm	17 PSI 39 Ft	45 PSI	2.25 lbs	3.5"	9"	1/8" Tank Valve (removable) and QD Nipple	(1) 1/4" Eyebolt Frontside	3/4" NPT (female) Threaded
6"-8" Max-Flow Guzzler™ with 4" OD Aluminum Bypass with Slip Fit Connection (no threads)	264-68	5.75" 150 mm	8.5" 215 mm	10 PSI 23 Ft	40 PSI	7.5 lbs	5.5"	14"	1/4" QD Nipple (removable)	(1) 1/4" x 1-1/8" Galvanized Shackles Frontside	4" (male) Tube (Slip-Fit) No Threads
6"-10" FatBoy Guzzler™ with 2" Threaded Aluminum Bypass with 2" Female NPT Connection	250-610	5.5" 140 mm	10.5" 266 mm	13 PSI 30 Ft	30 PSI	7 lbs	5.25"	17.5"	1/8" Tank Valve (removable) and QD Nipple	(1) 1/4" Eyebolt Frontside	2" NPT (female) Threaded
6"-10" Max-Guzzler™ with 4" Threaded Aluminum Bypass with 4" Male NPT Connection	274-610	5.75" 146 mm	10.5" 250 mm	10 PSI 23 Ft	35 PSI	13 lbs	5.6"	23"	1/4" QD Nipple (removable)	(1) 1/4" x 1-1/8" Galvanized Shackles Frontside	4" NPT (male) Threaded
8"-12" FatBoy Guzzler™ with 3" Threaded Aluminum Bypass with 3" Female NPT Connection	250-812	7" 177 mm	12.64" 321 mm	13 PSI 30 Ft	25 PSI	11.5 lbs	6.75"	19"	1/4" QD Nipple (removable)	(1) 3/8" Eyebolt Frontside	3" NPT (female) Threaded
8"-12" Max-Guzzler™ with 4" Threaded Aluminum Bypass with 4" Male NPT Connection	274-812	7" 177 mm	12.64" 321 mm	10 PSI 23 Ft	45 PSI	20 lbs	6.5"	26.5"	1/4" QD Nipple (removable)	(1) 1/4" x 1-1/8" Galvanized Shackles Frontside	4" NPT (male) Threaded
8-12" Max-Flow Guzzler™ with 4" Aluminum Tube Bypass with Slip Fit Connections (no threads)	264-812	7" 175 mm	12.5" 315 mm	10 PSI 23 Ft	40 PSI	10.5 lbs	5.5"	19"	1/4" QD Nipple (removable)	(1) 1/4" x 1-1/8" Galvanized Shackles Frontside	4" (male) Tube (Slip-Fit) No Threads
8"-12" Max-Guzzler™ with 6" Threaded Aluminum Bypass with 6" Male NPT Connection	276-812	7" 175 mm	12.64" 321 mm	10 PSI 23 Ft	35 PSI	20 lbs	7.5"	25"	1/4" QD Nipple (removable)	(1) 1/4" x 1-1/8" Galvanized Shackles Frontside	6" NPT (male) Threaded
8-12" Max-Flow Guzzler™ with 6" OD Aluminum Bypass with Slip Fit Connections (no threads)	266-812	7.75" 195 mm	12.50" 315 mm	10 PSI 23 Ft	40 PSI	14 lbs	7.25"	19"	1/4" QD Nipple (removable)	(1) 1/4" x 1-1/8" Galvanized Shackles Frontside	6" (male) Tube (Slip-Fit)
12"-18" FatBoy Guzzler™ with 4" Threaded Aluminum Bypass with 4" Male NPT Connection	274-1218	10.75" 300 mm	18.5" 470 mm	10 PSI 23 Ft	35 PSI	47 lbs	10.5"	32"	1/4" QD Nipple (removable)	(1) 1/4" x 1-1/8" Galvanized Shackles Frontside	4" NPT (male) Threaded
12"-18" FatBoy Guzzler™ with 4" Threaded Aluminum Bypass and Max-Guard™ (relief valve) and Max-Sleeve™ Installed with 4" Male NPT Connection	274-1218 MGMS	10.75" 300 mm	18.5" 470 mm	10 PSI 23 Ft	35 PSI	47 lbs	10.5"	32"	1/4" QD Nipple (removable)	(1) 1/4" x 1-1/8" Galvanized Shackles Frontside	4" NPT (male) Threaded
12"-18" Max-Guzzler™ with 6" Threaded Aluminum Bypass with 6" Male NPT Connection.	276-1218	10" 254 mm	18.5" 470 mm	10 PSI 23 Ft	35 PSI	48 lbs	9.5"	30.75"	1/4" QD Nipple (removable)	(1) 1/4" x 1-1/8" Galvanized Shackles Frontside	6" NPT (male) Threaded
12"-18" FatBoy Guzzler™ with 6" Threaded Aluminum Bypass and Max-Guard™ (relief valve) and Max-Sleeve™ Installed with 6" Male NPT Connection	276-1218 MGMS	10" 254 mm	18.5" 470 mm	10 PSI 23 Ft	35 PSI	58 lbs	10"	30.75"	1/4" QD Nipple (removable)	(1) 1/4" x 1-1/8" Galvanized Shackles Frontside	6" NPT (male) Threaded
12"-18" FatBoy Guzzler™ with 8" Threaded Aluminum Bypass with 8" Male NPT Connection	278-1218	10" 254 mm	18.5" 470 mm	10 PSI 23 Ft	35 PSI	48 lbs	9.5"	31"	1/4" QD Nipple (removable)	(1) 1/4" x 1-1/8" Galvanized Shackles Frontside	8" NPT (male) Threaded (no cap)
12"-18" FatBoy Guzzler™ with 8" Threaded Aluminum Bypass and Max-Guard™ (relief valve) and Max-Sleeve™ Installed with 8" Male NPT Connection	278-1218 MGMS	10" 254 mm	18.5" 470 mm	10 PSI 23 Ft	35 PSI	58 lbs	10"	30.75"	1/4" QD Nipple (removable)	(1) 1/4" x 1-1/8" Galvanized Shackles Frontside	8" NPT (male) Threaded (no cap)
12"-24" Max-Guzzler™ with 4" Threaded Aluminum Bypass with 4" Male NPT Connection	274-1224	10" 254 mm	24.5" 622 mm	5 PSI 11.5 Ft	45 PSI	59 lbs	9.5"	42.5"	1/4" QD Nipple (removable)	(1) 1/4" x 1-1/8" Galvanized Shackles Frontside	4" NPT (male) Threaded
12"-24" FatBoy Guzzler™ with 4" Threaded Aluminum Bypass and Max-Guard™ (relief valve) and Max-Sleeve™ Installed with 4" Male NPT Connection	274-1224 MGMS	10" 254 mm	24.5" 622 mm	5 PSI 11.5 Ft	45 PSI	72 lbs	9.5"	42.5"	1/4" QD Nipple (removable)	(1) 1/4" x 1-1/8" Galvanized Shackles Frontside	4" NPT (male) Threaded
12"-24" Max-Guzzler™ with 6" Threaded Aluminum Bypass with 6" Male NPT Connection	276-1224	10" 254 mm	24.5" 622 mm	5 PSI 11.5 Ft	45 PSI	61 lbs	9.5"	42.5"	1/4" QD Nipple (removable)	(1) 1/4" x 1-1/8" Galvanized Shackles Frontside	6" NPT (male) Threaded
12"-24" FatBoy Guzzler™ with 6" Threaded Aluminum Bypass and Max-Guard™ (relief valve) and Max-Sleeve™ Installed with 6" Male NPT Connection	276-1224 MGMS	10" 254 mm	24.5" 622 mm	5 PSI 11.5 Ft	45 PSI	77 lbs	9.5"	42.5"	1/4" QD Nipple (removable)	(1) 1/4" x 1-1/8" Galvanized Shackles Frontside	6" NPT (male) Threaded
12"-24" Max-Guzzler™ with 8" Threaded Bypass with 8" Male NPT Connections (no PVC cap)	278-1224	10" 254 mm	24.5" 622 mm	5 PSI 11.5 Ft	45 PSI	63 lbs	9.5"	43"	1/4" QD Nipple (removable)	(1) 1/4" x 1-1/8" Galvanized Shackles Frontside	8" NPT (male) Threaded (no cap)
12"-24" FatBoy Guzzler™ with 8" Threaded Bypass and Max-Guard™ (relief valve) and Max-Sleeve™ Installed with 8" Male NPT Connections (no PVC cap)	278-1224 MGMS	10" 254 mm	24.5" 622 mm	5 PSI 11.5 Ft	45 PSI	77 lbs	9.5"	43"	1/4" QD Nipple (removable)	(1) 1/4" x 1-1/8" Galvanized Shackles Frontside	8" NPT (male) Threaded (no cap)



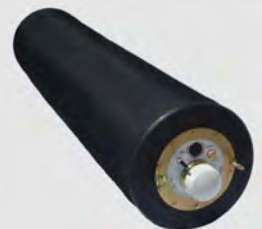
# Multi-Size FatBoy Guzzlers™ and Max-Guzzlers™

Description	Part #	Size Usage Range		Maximum Allowable Back Pressure PSI and Feet of Head	Required Inflation Pressure	Weight	Deflated Diameter	Deflated Length	Inflation Fitting	Eye Bolt Size & Quantity	Bypass Size (connection)
		Minimum Diameter	Maximum Diameter								
15"-30" FatBoy Guzzler™ with 4" Flexible Bypass and Max-Guard™ (relief valve™) with 4" Male NPT Connection	250-1530MG	14" 355 mm	31.5" 775 mm	11 PSI 25 Ft	25 PSI	68 lbs	14"	58"	(1) 1/4" QD Nipple (removable) (1) 1/2" (F) NTP (plugged)	(2) 1/2" Eyebolt Frontside (2) 1/2" Eyebolt Optional Backside	4" NPT (male) Threaded
15"-30" FatBoy Guzzler™ with 4" Flexible Bypass and Max-Guard™ (relief valve) and Max-Sleeve™ Installed with 4" Male NPT Connection	250-1530 MGMS	14.25" 362 mm	31.5" 775 mm	11 PSI 25 Ft	25 PSI	90 lbs	14"	58"	(1) 1/4" QD Nipple (removable) (1) 1/2" (F) NTP (plugged)	(2) 1/2" Eyebolt Frontside (2) 1/2" Eyebolt Optional Backside	4" NPT (male) Threaded
18"-36" FatBoy Guzzler™ with 4" Flexible Bypass and Max-Guard™ (relief valve) with 4" Male NPT Connection	250-1836MG	16.5" 419 mm	37.5" 950 mm	11 PSI 25 Ft	25 PSI	88 lbs	16"	65"	(1) 1/4" QD Nipple (removable) (1) 1/2" (F) NTP (plugged)	(2) 1/2" Eyebolt Frontside (2) 1/2" Eyebolt Optional Backside	4" NPT (male) Threaded
18"-36" FatBoy Guzzler™ with 4" Flexible Bypass and Max-Guard™ (relief valve) and Max-Sleeve™ Installed with 4" Male NPT Connection	250-1836 MGMS	17" 430 mm	37.5" 950 mm	11 PSI 25 Ft	25 PSI	118 lbs	16.5"	65"	(1) 1/4" QD Nipple (removable) (1) 1/2" (F) NTP (plugged)	(2) 1/2" Eyebolt Frontside (2) 1/2" Eyebolt Optional Backside	4" NPT (male) Threaded
24"-48" FatBoy Guzzler™ with 4" Flexible Bypass and Max-Guard™ (relief valve) with 4" Male NPT Connection	250-2448MG	22" 558 mm	49.5" 1,257 mm	11 PSI 25 Ft	25 PSI	140 lbs	21"	82"	(1) 1/4" QD Nipple (removable) (1) 1/2" (F) NTP (plugged)	(2) 1/2" Eyebolt Frontside (2) 1/2" Eyebolt Optional Backside	4" NPT (male) Threaded
24"-48" FatBoy Guzzler™ with 4" Flexible Bypass and Max-Guard™ (relief valve) and Max-Sleeve™ Installed with 4" Male NPT Connection	250-2448 MGMS	22" 558 mm	49.5" 1,257 mm	11 PSI 25 Ft	25 PSI	190 lbs	21"	82"	(1) 1/4" QD Nipple (removable) (1) 1/2" (F) NTP (plugged)	(2) 1/2" Eyebolt Frontside (2) 1/2" Eyebolt Optional Backside	4" NPT (male) Threaded
24"-48" FatBoy Guzzler™ with 6" Flexible Bypass and Max-Guard™ (relief valve) with 4" Male NPT Connection	276-2448MG	22" 558 mm	49.5" 1,257 mm	11 PSI 25 Ft	25 PSI	150 lbs	21"	82"	(1) 1/4" QD Nipple (removable) (1) 1/2" (F) NTP (plugged)	(2) 1/2" Eyebolt Frontside (2) 1/2" Eyebolt Optional Backside	6" NPT (male) Threaded
24"-48" FatBoy Guzzler™ with 6" Flexible Bypass and Max-Guard™ (relief valve) and Max-Sleeve™ Installed with 6" Male NPT Connection	276-2448 MGMS	22" 558 mm	49.5" 1,257 mm	11 PSI 25 Ft	25 PSI	200 lbs	21"	82"	(1) 1/4" QD Nipple (removable) (1) 1/2" (F) NTP (plugged)	(2) 1/2" Eyebolt Frontside (2) 1/2" Eyebolt Optional Backside	6" NPT (male) Threaded
24"-60" FatBoy Guzzler™ With 4" Flexible Bypass and Max-Guard™ (relief valve) with 4" Male NPT Connection	250-2460MG	21"	61.5" 1560 mm	9 PSI 20 Ft	25 PSI	200 lbs	20.5"	95"	(1) 1/4" QD Nipple (removable) (1) 1/2" (F) NTP (plugged)	(2) 1/2" Eyebolt Frontside (2) 1/2" Eyebolt Optional Backside	4" NPT (male) Threaded
24"-60" FatBoy Guzzler™ With 4" Flexible Bypass and Max-Guard™ (relief valve) and Max-Sleeve™ Installed with 4" Male NPT Connection	250-2460 MGMS	21"	61.5" 1560 mm	9 PSI 20 Ft	25 PSI	265 lbs	21"	95"	(1) 1/4" QD Nipple (removable) (1) 1/2" (F) NTP (plugged)	(2) 1/2" Eyebolt Frontside (2) 1/2" Eyebolt Optional Backside	4" NPT (male) Threaded
24"-60" FatBoy Guzzler™ With 6" Flexible Bypass and Max-Guard™ (relief valve) with 6" Male NPT Connection	276-2460MG	21"	61.5" 1560 mm	9 PSI 20 Ft	25 PSI	215 lbs	20.5"	95"	(1) 1/4" QD Nipple (removable) (1) 1/2" (F) NTP (plugged)	(2) 1/2" Eyebolt Frontside (2) 1/2" Eyebolt Optional Backside	6" NPT (male) Threaded
24"-60" FatBoy Guzzler™ With 6" Flexible Bypass and Max-Guard™ (relief valve) and Max-Sleeve™ Installed with 6" Male NPT Connection	276-2460 MGMS	21"	61.5" 1560 mm	9 PSI 20 Ft	25 PSI	270 lbs	21"	95"	(1) 1/4" QD Nipple (removable) (1) 1/2" (F) NTP (plugged)	(2) 1/2" Eyebolt Frontside (2) 1/2" Eyebolt Optional Backside	6" NPT (male) Threaded



PN: 250-2448MGMS

**Caution: Always block  
plugs when conducting  
air tests!**



PN: 250-2460MG



# Multi-Size FatBoy Guzzlers™ and Max-Guzzlers™

**New expanded size range.** Our 24"-60" plug will seal 54" and 60" pipe and still fit through a 24" manhole opening.

**Flexible Bypasses** on all plugs 15"-30" and larger allows for simple installation.

**Optional Max-Guard™** on 12"-18" and larger plugs. The Max-Guard™ relief valve helps prevent the plug from being over inflated due to operator error or malfunctioning gauges.



PN: 274-1224MGMS



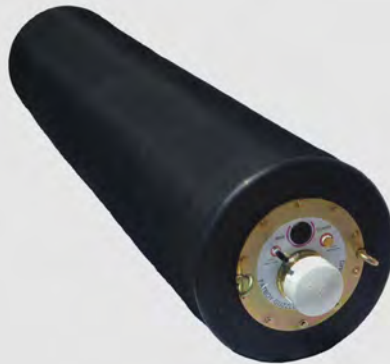
PN: 276-812



PN: 264-68 , PN: 264-812, PN: 266-812

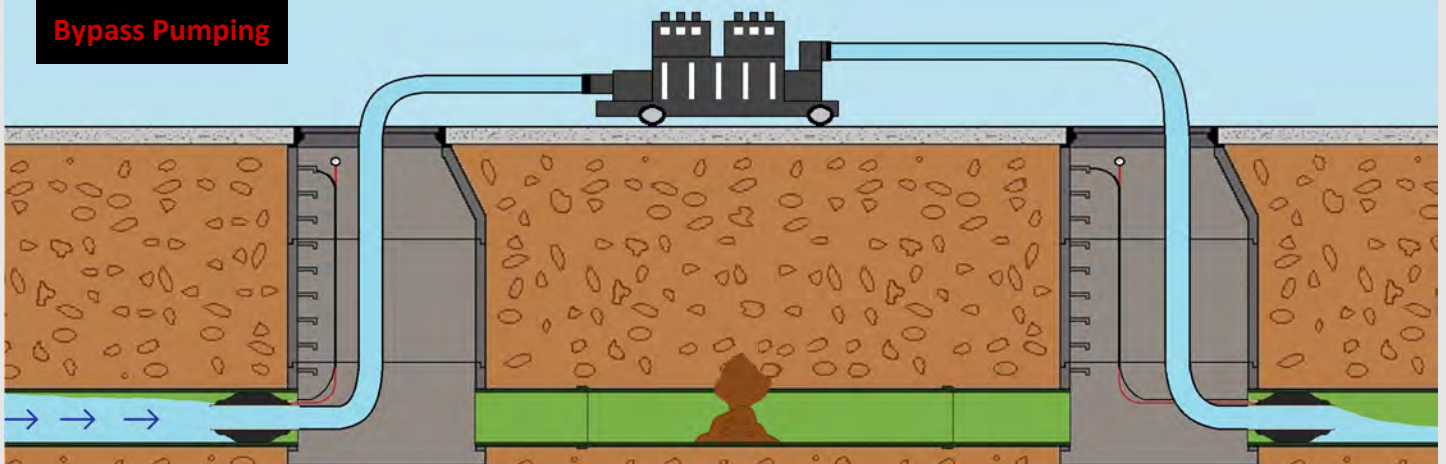


PN: 250-812



PN: 250-2460MG

**Bypass Pumping**



# FatBoy Max-Sleeve™

Description	Part #	Product Weight	Product Length	Eyelet
12"-18" Max-Sleeve™	600-1218	10 lbs	28 "	(4) 1/2" on each end
12"-18" Max-Sleeve™ Installed on Plug (Sold Separately) (Includes 5/16" Coated Cable for Securing Sleeve on the Plug)	600-1218SI	11 lbs	28"	(4) 1/2" on each end
12"-18" Max-Sleeve™ for Max-Guzzler Style Plug	600-1218GZ	10 lbs	25"	None
12"-18" Max-Sleeve™ for Max-Guzzler Installed on Plug (Sold Separately)	600-1218GZSI	11 lbs	25"	None
12"-24" Max-Sleeve™	600-1224	13.25 lbs	39"	(4) 1/2" on each end
12"-24" Max-Sleeve™ Installed on Plug (Sold Separately) (Includes 5/16" Coated Cable for Securing Sleeve on the Plug)	600-1224SI	14.25 lbs	39"	(4) 1/2" on each end
12"-24" Max-Sleeve™ for Max-Guzzler Style Plug	600-1224GZ	13.25 lbs	37"	None
12"-24" Max-Sleeve™ for Max-Guzzler Style Plug Installed on Plug (Sold Separately)	600-1224GZSI	13.25 lbs	37"	None
15"-30" Max-Sleeve™	600-1530	21 lbs	50.5"	(4) 1/2" on each end
15"-30" Max-Sleeve™ Installed on Plug (Sold Separately) (Includes 5/16" Coated Cable for Securing Sleeve on the Plug)	600-1530SI	22 lbs	50.5"	(4) 1/2" on each end
18"-36" Max-Sleeve™	600-1836	35 lbs	60"	(4) 1/2" on each end
18"-36" Max-Sleeve™ Installed on Plug (Sold Separately) (Includes 5/16" Coated Cable for Securing Sleeve on the Plug)	600-1836SI	36 lbs	60"	(4) 1/2" on each end
24"-48" Max-Sleeve™	600-2448	62 lbs	76"	(4) 1/2" on each end
24"-48" Max-Sleeve™ Installed on Plug (Sold Separately) (Includes 5/16" Coated Cable for Securing Sleeve on the Plug)	600-2448SI	51 lbs	76"	(4) 1/2" on each end
24"-60" Max-Sleeve™	600-2460	62 lbs	95"	(4) 1/2" on each end
24"-60" Max-Sleeve™ Installed on Plug (Sold Separately) (Includes 5/16" Coated Cable for Securing Sleeve on the Plug)	600-2460SI	63 lbs	95"	(4) 1/2" on each end
12"-18" or 12"-24" Cable Sleeve Harness Kit	605-1224	1 lbs	N/A	NA
15"-30" Cable Sleeve Harness Kit	605-1530	1 lbs	N/A	NA
18"-36" Cable Sleeve Harness Kit	605-1836	1 lbs	N/A	NA
24"-48" or 24"-60" Cable Sleeve Harness Kit	605-2448	1 lbs	N/A	NA

Our FatBoy Max-Sleeves™ were designed to be an extra protective layer (1/4" natural rubber) over our multi-size FatBoy™ plugs sizes 12"-18" and larger.

The Max-Sleeve™ greatly reduces damage a plug can sustain from pipeline debris, degraded pipes and sharp objects. Add "SI" to the end of any sleeve part number and the sleeve will be installed at the factory on a matching sized plug (plug sold separately). Plug installation also includes a Cable Sleeve Harness Kit that includes 5/16" coated cable for securing the sleeve to the plugs.

All sleeves (except sleeves for Max-Guzzlers™) included four 1/2" eyelets (4) on each end for securing the sleeve to the plug. Each rubber eyelet is reinforced with high strength fabric cording for durability and holding power.

If you are putting a sleeve on the 12"-18" or 12"-24" Max-Guzzler™ plug you must purchase the sleeve with "GZSI" on the end of the part number. These sleeves are snugger fittings to help the sleeve stay on the plug. These sleeves do not have eyelets.



PN: 600-1224



PN: 225-1224SI



PN: 274-1224MGMS

# Multi-Size FatBoy Testers™

Our FatBoy Tester™ plugs come standard with 3/4" and 1/4" bypasses(except 4"-6" which comes with (2) 1/4" bypass ports) allowing for easy transition from a blocking plug to an air testing plug.

**Natural rubber** construction gives our FatBoy Tester™ plugs a sizable usage range and long lasting durability.

**Inflation Fitting:** Removable/replaceable 1/4" QD Nipple standard on all Fatboy Testers™. Our 15"-30" and larger plugs also include an additional 1/2" port for faster deflation. A 1/2" port is not recommended for inflation of the plugs.

**Cross-woven fabric** gives our plugs strength and durability.

**Our Flexible bypasses** on all 12"-18" and larger plugs make our FatBoy Tester™ flexible and easy to install.

**Our innovative manufacturing** process allows our 15"-30" and larger plugs to be vulcanized in one cure. Our use of high strength cording throughout the plug and around each end of the plug ensures maximum strength and durability.

**Max-Guard™ relief valve** is standard on all 15"-30" and larger Tester™ plugs and is optional on 12"-18" and 12"-24" Tester™ plugs. The Max-Guard™ relief valve helps prevent the plug from being over inflated due to user error or malfunctioning gauges.



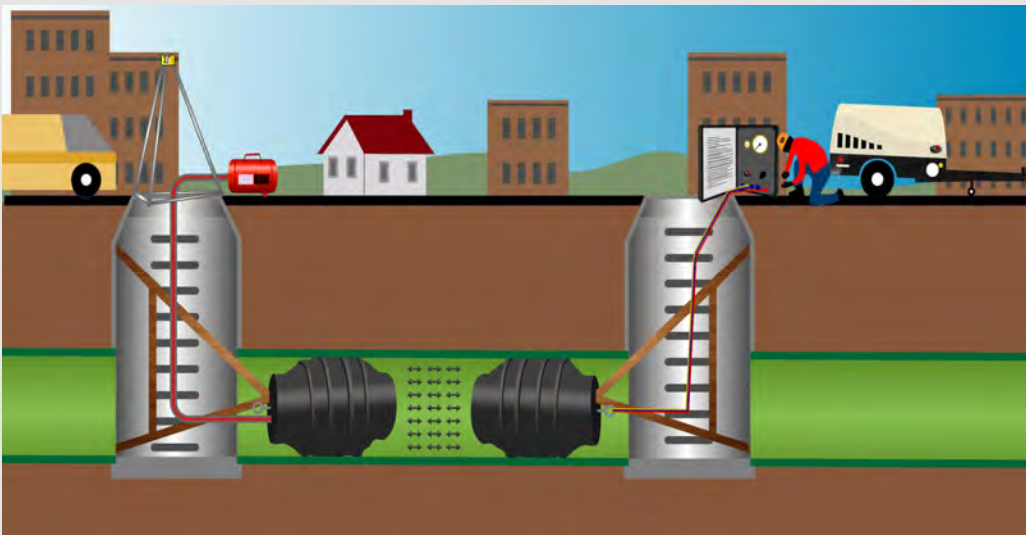
225-1530MG

Tester Folded to 90 degrees



Pictured: 225-2460MGMS

Now available in 24"-60" size usage range!



**Recommended Applications:**  
Air Testing (front and back side), Blocking Flow, Vacuum Testing.

**Caution: Always block plugs when conducting air tests.**

# Multi-Size FatBoy Tester™

Description	Part #	Size Usage Range		Maximum Allowable Back Pressure PSI and Feet of Head	Required Inflation Pressure	Weight	Deflated Diameter	Deflated Length	Inflation Fitting	Eye Bolt Size & Quantity	Bypass Size (s)/ Connection
		Minimum Diameter	Maximum Diameter								
4"-6" FatBoy Tester™	225-46	3.75" 95 mm	6.4" 162 mm	17 PSI 39 Ft	45 PSI	2.5 lbs	3.5"	10"	1/8" Quick Disconnect Nipple (removable)	(1) 1/4" Frontside	(2) 1/4" NPT (female)
6"-10" FatBoy Tester™	225-610	5.5" 150 mm	10.58" 268 mm	13 PSI 30 Ft	25 PSI	6.5 lbs	5.25"	16"	1/4" Quick Disconnect Nipple (removable)	(1) 3/8" Frontside (1) Optional 3/8" Backside	3/4" NPT (female) 1/4" NPT (female)
<b>New Size !</b> 6"-12" FatBoy Tester™	225-612	5.5" 150 mm	12.5" 317 mm	11 PSI 25 Ft	30 PSI	10 lbs	5.25"	27"	1/4" Quick Disconnect Nipple (removable)	(1) 3/8" Frontside (1) Optional 3/8" Backside	3/4" NPT (female) 1/4" NPT (female)
8"-12" FatBoy Tester™	225-812	7.0" 200 mm	12.64" 321 mm	13 PSI 30 Ft	25 PSI	10 lbs	6.5"	19"	1/4" Quick Disconnect Nipple (removable)	(1) 3/8" Frontside (1) Optional 3/8" Backside	3/4" NPT (female) 1/4" NPT (female)
12"-18" FatBoy Tester™	225-1218	11" 300 mm	18.5" 450 mm	13 PSI 30 Ft	25 PSI	31 lbs	10.75"	28"	1/4" Quick Disconnect Nipple (removable)	(1) 3/8" Frontside (1) Optional 3/8" Backside	3/4" NPT (female) 1/4" NPT (female)
<b>New Optional Relief Valve!</b> 12"-18" FatBoy Tester™ With Max-Guard™ (relief valve)	225-1218MG	11" 300 mm	18.5" 450 mm	13 PSI 30 Ft	25 PSI	33 lbs	10.75"	28"	1/4" Quick Disconnect Nipple (removable)	(1) 3/8" Frontside (1) Optional 3/8" Backside	3/4" NPT (female) 1/4" NPT (female)
12"-18" FatBoy Tester™ With Max-Sleeve™ Installed	225-1218MS	11" 300 mm	18.5" 450 mm	13 PSI 30 Ft	25 PSI	42 lbs	10.75"	28"	1/4" Quick Disconnect Nipple (removable)	(1) 3/8" Frontside (1) Optional 3/8" Backside	3/4" NPT (female) 1/4" NPT (female)
<b>New Optional Relief Valve!</b> 12"-18" FatBoy Tester™ With Max-Guard™ (relief valve) and Max-Sleeve™ Installed	225-1218MGMS	11" 300 mm	18.5" 450 mm	13 PSI 30 Ft	25 PSI	44 lbs	10.75"	28"	1/4" Quick Disconnect Nipple (removable)	(1) 3/8" Frontside (1) Optional 3/8" Backside	3/4" NPT (female) 1/4" NPT (female)
12"-24" FatBoy Tester™	225-1224	11" 300 mm	24.5" 600 mm	13 PSI 30 Ft	30 PSI	37 lbs	10.75"	37"	1/4" Quick Disconnect Nipple (removable)	(1) 3/8" Frontside (1) Optional 3/8" Backside	3/4" NPT (female) 1/4" NPT (female)
<b>New Optional Relief Valve!</b> 12"-24" FatBoy Tester™ With Max-Guard™ (relief valve)	225-1224MG	11" 300 mm	24.5" 600 mm	13 PSI 30 Ft	30 PSI	37 lbs	10.75"	37"	1/4" Quick Disconnect Nipple (removable)	(1) 3/8" Frontside (1) Optional 3/8" Backside	3/4" NPT (female) 1/4" NPT (female)
12"-24" FatBoy Tester™ With Max-Sleeve™ Installed	225-1224MS	11" 300 mm	24.5" 600 mm	13 PSI 30 Ft	30 PSI	50 lbs	10.75"	37"	1/4" Quick Disconnect Nipple (removable)	(1) 3/8" Frontside (1) Optional 3/8" Backside	3/4" NPT (female) 1/4" NPT (female)
<b>New Optional Relief Valve!</b> 12"-24" FatBoy Tester™ With Max-Guard™ (relief valve) and Max-Sleeve™ Installed	225-1224MGMS	11" 300 mm	24.5" 600 mm	13 PSI 30 Ft	30 PSI	51 lbs	10.75"	37"	1/4" Quick Disconnect Nipple (removable)	(1) 3/8" Frontside (1) Optional 3/8" Backside	3/4" NPT (female) 1/4" NPT (female)

**PN: 225-1224MG**



**New Size!**



**PN: 225-612**

## Features:

- **New Size! 6"-12" usage range.** Great for your rental fleet.
- **Optional Max-Guard™ (relief valve) (MG)** on all plugs 12"-18" and 12"-24".
- **Max-Guard (MG)** is standard on all plugs 15"-30" and larger.
- **Optional Max-Sleeve™ (MS)** is available on all plugs 12"-18" and larger.
- **Zinc plated** for superior corrosion resistance on all plugs

# Multi-Size FatBoy Tester™

Description	Part #	Size Usage Range		Maximum Allowable Back Pressure PSI and Feet of Head	Required Inflation Pressure	Weight	Deflated Diameter	Deflated Length	Inflation Fitting	Eye Bolt Size & Quantity	Bypass Size (s)/ Connection
		Minimum Diameter	Maximum Diameter								
15"-30" FatBoy Tester™ With Max-Guard™ (relief valve)	225-1530MG	14" 375 mm	31.5" 800 mm	11 PSI 25 Ft	25 PSI	51 lbs	13.75"	50"	(1) 1/4" QD Nipple (removable) (1) 1/2" (F) NTP (plugged)	(2) 1/2" Eyebolt Frontside (2) Optional 1/2" Backside	3/4" NPT (female) 1/4" NPT (female)
15"-30" FatBoy Tester™ With Max-Guard™ (relief valve) and Max-Sleeve™ Installed	225-1530 MGMS	14" 375 mm	31.5" 800 mm	11 PSI 25 Ft	25 PSI	72 lbs	13.75"	50"	(1) 1/4" QD Nipple (removable) (1) 1/2" (F) NTP (plugged)	(2) 1/2" Eyebolt Frontside (2) Optional 1/2" Backside	3/4" NPT (female) 1/4" NPT (female)
18"-36" FatBoy Tester™ With Max-Guard™ (relief valve)	225-1836MG	16.5" 420 mm	37.5" 950 mm	11 PSI 25 Ft	25 PSI	90 lbs	16"	60"	(1) 1/4" QD Nipple (removable) (1) 1/2" (F) NTP (plugged)	(2) 1/2" Eyebolt Frontside (2) Optional 1/2" Backside	3/4" NPT (female) 1/4" NPT (female)
18"-36" FatBoy Tester™ With Max-Guard™ (relief valve) and Max-Sleeve™ Installed	225-1836 MGMS	17" 420 mm	37.5" 950 mm	11 PSI 25 Ft	25 PSI	120 lbs	16"	60"	(1) 1/4" QD Nipple (removable) (1) 1/2" (F) NTP (plugged)	(2) 1/2" Eyebolt Frontside (2) Optional 1/2" Backside	3/4" NPT (female) 1/4" NPT (female)
24"-48" FatBoy Tester™ With Max-Guard™ (relief valve)	225-2448MG	22" 610 mm	49.5" 1,250 mm	11 PSI 25 Ft	25 PSI	124 lbs	21"	76"	(1) 1/4" QD Nipple (removable) (1) 1/2" (F) NTP (plugged)	(2) 1/2" Eyebolt Frontside (2) Optional 1/2" Backside	3/4" NPT (female) 1/4" NPT (female)
24"-48" FatBoy Tester™ With Max-Guard™ (relief valve) and Max-Sleeve™ Installed	225-2448 MGMS	22" 610 mm	49.5" 1,250 mm	11 PSI 25 Ft	25 PSI	174 lbs	21"	76"	(1) 1/4" QD Nipple (removable) (1) 1/2" (F) NTP (plugged)	(2) 1/2" Eyebolt Frontside (2) Optional 1/2" Backside	3/4" NPT (female) 1/4" NPT (female)
24"-60" FatBoy Tester™ With Max-Guard™ (relief valve)	225-2460MG	22" 610 mm	61.5" 1,560 mm	9 PSI 20 Ft	25 PSI	180 lbs	20.5"	95"	(1) 1/4" QD Nipple (removable) (1) 1/2" (F) NTP (plugged)	(2) 1/2" Eyebolt Frontside (2) Optional 1/2" Backside	3/4" NPT (female) 1/4" NPT (female)
24"-60" FatBoy Tester™ With Max-Guard™ (relief valve) and Max-Sleeve™ Installed	225-2460 MGMS	22" 610 mm	61.5" 1,560 mm	9 PSI 20 Ft	25 PSI	245 lbs	21"	95"	(1) 1/4" QD Nipple (removable) (1) 1/2" (F) NTP (plugged)	(2) 1/2" Eyebolt Frontside (2) Optional 1/2" Backside	3/4" NPT (female) 1/4" NPT (female)

Max-Guard™ (relief valve) is standard on all plugs 15"-30" and larger. Optional Max-Guard™ (relief valve) is available on 12"-18" and 12"-24" plugs just add MG to the part number.

Part numbers with MS on the end will include a Max-Sleeve installed.



PN: 225-1530MGMS



PN: 225-2460MG

**Caution: Always block plugs when conducting air tests.**

# Air Testing Equipment

Pictured: 500-00



## Part Number: 500-00

**Max-Flow™ Control Panel** is designed to perform a line acceptance test for a pipe line. The panel is color coded to make it easy to identify and connect to the Max-Flow Triple Hose. The plug pressure regulator allows you to quickly inflate the FatBoy Tester™ plug to the proper inflation pressure without over-inflating or underinflating the plug. A durable plastic Pelican® case protects the gauges during transport and use.

## Part Number: 500-50

**Mini-Max™ Air Test Kit:** This kit connects to the 25' and 50' triple hose (950-25 and 950-50) and allows the contractor to control a sewer line air test. Included is a 0-15 PSI test gauge attached to the 1/4" read back hose (yellow). It also includes a 0-60 PSI gauge tree to attached to the 1/4" hose (red) for inflating and deflating the Tester™ (front) plug. It also includes a ball valve for controlling the air flow into the test area through the 3/4" hose (blue).



Pictured: 950-25

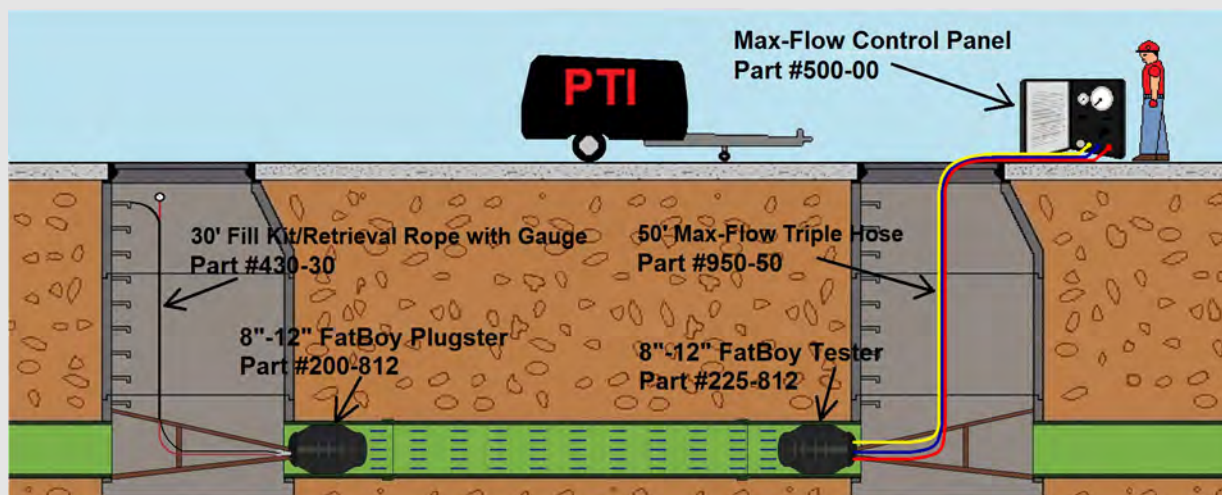
**Max-Flow Triple Hose:** The Max=Flow Triple Hose has a 3/4" hose that pressurizes the test area, one 1/4" hose for inflating a FatBoy Tester™ plug and one 1/4" hose for reading the pressure back to the test pressure gauge on the control panel. The hoses are color coded to make it simple to identify which hose goes to each connection on the plug and the control panel.

Part Number 950-25 25' Max-Flow™ Triple Hose

Part Number 950-50 50' Max-Flow™ Triple Hose



Pictured: 500-50 with 950-25



# Air Testing Equipment

**MAX-Flow AT™ Line Acceptance Kit** has everything a contractor needs to perform a sewer line air test (except for the air compressor). Our color coded triple hose has quick disconnect fittings making it easy and fast to properly connect to both the Max-Flow™ Control Panel and the FatBoy Tester™ plug. Our Max-Flow AT™ kits include a set of either 6"-10" or 8"-12" FatBoy Plugster™ and Tester™ plugs.



**Pictured above:  
PN: 525-25**

**Caution: Always  
block plugs when  
conducting air tests.**



**Pictured  
PN: 500-812**

Part Number	Description
500-00	Max-Flow™ Control Panel
500-50	Mini-Max™ Air Test Kit (Connects to 950 Series Triple Hose to Perform an Air Test)
950-50	50' Max-Flow™ Triple Hose
950-25	25' Max-Flow™ Triple Hose
960-25	25' Mini-Max™ Triple Hose 3/8" Hose (connects our 4"-6" and the 4"-8" Tester Plugs to the Control Panel)
960-50	50' Mini-Max™ Triple Hose 3/8" Hose (connects our 4"-6" and 4"-8" Tester Plugs to the Control Panel)
525-25	25' Mini-Max™ Triple Hose 3/8" Hose Air Test System (includes 0-15 PSI Gauge and 0-60 PSI Gauge and Ball Valve)
465-00	Valve Compressor Reducer (Chicago to QD-Male)
500-100 Includes:	Max-Flow™ AT Line Acceptance Kit (without plugs)
500-00	Max-Flow Control Panel
950-50	50' Max-Flow Triple Hose
430-30	30' Fill Kit (1/4" Hose) Retrieval Rope with Gauge
50-091	Durable Plastic Storage Box
500-610 Includes:	Max-Flow AT Line Acceptance Kit with 6"-10" Plugs
200-610	6"-10" FatBoy Plugster™
225-610	6"-10" FatBoy Tester™
500-00	Max-Flow™ Control Panel
950-50	50' Max-Flow™ Triple Hose
430-30	30' Fill Kit (1/4" Hose) Retrieval Rope with Gauge
50-091	Durable Plastic Storage Box
500-812 Includes:	Max-Flow AT Line Acceptance Kit with 8"-12" Plugs
200-812	8"-12" FatBoy Plugster™
225-812	8"-12" FatBoy Tester™
500-00	Max-Flow™ Control Panel
950-50	50' Tru-Test Triple Hose
430-30	30' Fill Kit (1/4" Hose) Retrieval Rope with Gauge
50-091	Durable Plastic Storage Box

**Pictured below: PN  
960-25 attached to  
500-00 and 225-46**



**Mini-Triple hose has (3) 3/8"  
ID hoses for connecting small  
Tester™ plugs to the control  
panel.**

# Single Size FatBoy Guzzlers™

Our natural rubber single size inflatable Guzzler™ plugs are used in a variety of different applications including blocking flow, bypassing and air testing.

Single size Guzzler™ plugs are our most versatile and economical inflatable bypass plugs.

Aluminum bypasses make these plugs lightweight and easy to install.

Our Guzzler™ plugs come standard with a removable 1/8" or 1/4" tank valve (tire valve).

The 3" plastic molded two port (1/2" and 1/4") Guzzler™ plug makes it easy to convert our Guzzlers™ into Testers™ without purchasing any additional conversion caps/plugs.

All single size plugs include a removable eyebolt (1/4" or 3/8") for lifting and lowering the plug.



**Recommended Accessories:**

**Part # 410-30**

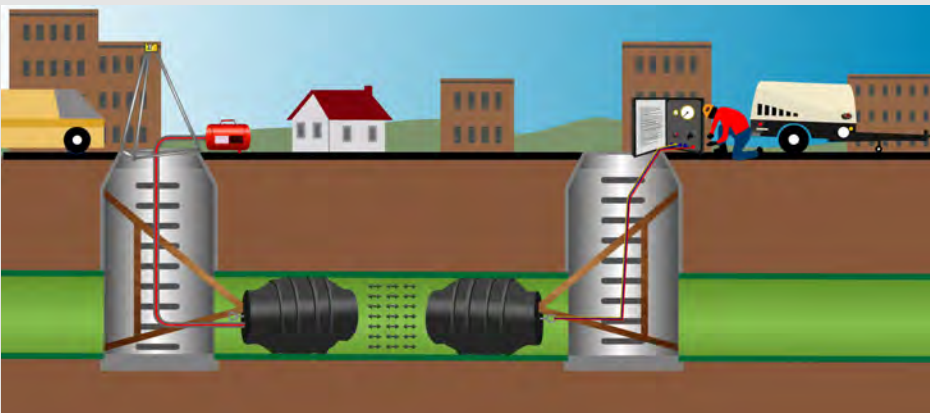
30' Fill Kit without gauge (Swivel-Ball).

**Catalog Page 23**



**Recommended Applications:** blocking flow, air testing, bypassing pumping flow and gravity bypassing.

**Caution: Always block plugs when conducting air tests.**



Size Usage Range

Description	Part #	Minimum Diameter	Maximum Diameter	Maximum Allowable Back Pressure PSI and Feet of Head	Required Inflation Pressure	Weight	Deflated Diameter	Deflated Length	Inflation Fitting	EyeBolt Size & Quantity	Bypass Size (s)
6" FatBoy Guzzler™	150-06	5" 127mm	6.4" 162mm	15 PSI 34 Ft	35 PSI	3 lbs	4.75"	6"	1/8" Tank Valve (Removable)	(1) 1/4"	1.5" NPT (F)
8" FatBoy Guzzler™	150-08	6.75" 171mm	8.55" 217mm	15 PSI 34 Ft	35 PSI	6.5 lbs	6.5"	8"	1/4" Tank Valve (Removable)	(1) 3/8"	3" NTP (F)
10" FatBoy Guzzler™	150-10	8.75" 222mm	10.58" 268mm	15 PSI 34 Ft	35 PSI	10 lbs	8.5"	10"	1/4" Tank Valve (Removable)	(1) 3/8"	3" NTP (F)
12" FatBoy Guzzler™	150-12	10.75" 273mm	12.64" 321mm	15 PSI 34 Ft	35 PSI	14.75 lbs	10.5"	12"	1/4" Tank Valve (Removable)	(1) 3/8"	3" NTP (F)
3" Molded Plug (2) Test Ports (1/4" and 1/2")	50-100										



# Manhole Vacuum Testing

Part #	Description	Usage Range	Unit OD	Bladder Inflation Pressure	Weight
555-2127	21" - 27" Bladder-Max™ Manhole Vacuum Testing Unit with Cam-Lock® style connection	21" - 27.5"	20.75"	25 PSI	72 lbs
555-2832	28" - 32" Bladder-Max™ Manhole Vacuum Testing Unit with Cam-Lock® style connection	28" - 32"	27.75"	25 PSI	110 lbs
555-38	38" Flat-Max™ Manhole Vacuum Unit with Cam-Lock® style connection	18" - 36"	38"	N/A	45 lbs
550-38	38" Flat-Max™ Manhole Vacuum Unit with Chicago (crowsfoot) style connection	18" - 36"	38"	N/A	45 lbs
555-44	44" Flat-Max™ Manhole Vacuum Unit with Cam-Lock® style connection	18" - 42"	44"	N/A	70 lbs
550-44	44" Flat-Max™ Manhole Vacuum Unit with Chicago (crowsfoot) style connection	18" - 42"	44"	N/A	70 lbs
555-00	Max-Vac™ II Venturi Pump with Cam-Lock® style connection	N/A	N/A	N/A	10 lbs
550-00	Max-Vac™ II Venturi Pump with Chicago (crowsfoot) style connection	N/A	N/A	N/A	10 lbs
55-2127B	21" - 27" Replacement Bladder	21" - 27.5"	20.75"	25 PSI	19 lbs
55-2832B	28" - 32" Replacement Bladder	28" - 32"	27.75"	25 PSI	33 lbs
37-001	0-60 PSI Liquid Filled Gauge (bladder inflation)	0-60 PSI	2.5"	N/A	.5 lbs
37-010	Rubber Gauge Guardian Bottom Mount 2.5" Dial	2.5"	4"	N/A	.5 lbs
37-012	Rubber Gauge Guardian Bottom Mount 4" Dial	4"	6"	N/A	.5 lbs
37-011	0-60 PSI Liquid Filled Gauge 2.5" Dial (bladder inflation) with Gauge Guardian Installed	0-60 PSI	2.5"	N/A	1 lbs
37-006	0-30HG Liquid Filled Vacuum Gauge	0-30 HG	4"	N/A	1 lbs
55-38F	1" Replacement Foam liner for 38" Flat-Max™ Plate (peal and stick)	38"	N/A	N/A	5 lbs
55-44F	1" Replacement Foam liner for 44" Flat-Max™ Plate (peal and stick)	44"	N/A	N/A	8 lbs

## Vacuum Testing Accessories



See Page 22 and 23

### 555-00 Max-Vac™ II Venturi Pump Pictured Below

- ◆ Our Max-Vac™ II Venturi Pump offers high vacuum flows for the rapid evacuation of manholes.
- ◆ This lightweight aluminum unit attaches easily to the vacuum head assemblies with a Cam-Lock® coupler.
- ◆ Recommended air compressor size: 85 CFM at 100 psi or higher.



Max-Vac II Venturi Pump

PN: 555-00

# Manhole Vacuum Testing - Bladder-Max™ with Cam-Lock® Connection



The Cam-Lock® connection allow for a easy, quick and secure connection from the Max-Vac II venturi pump to the Bladder-Max™ assembly.

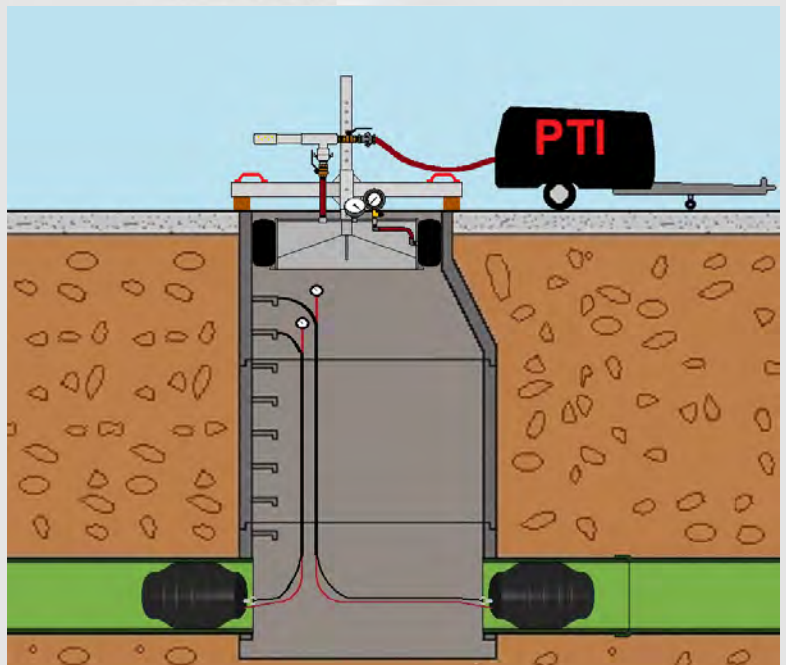
Available Usage  
Ranges:  
21"-27.5"  
28"-32"



555-2127  
shown with  
555-00  
(Max-vac II)

## Bladder-Max™ Manhole Vacuum Test Assembly with Cam-Lock® Connection

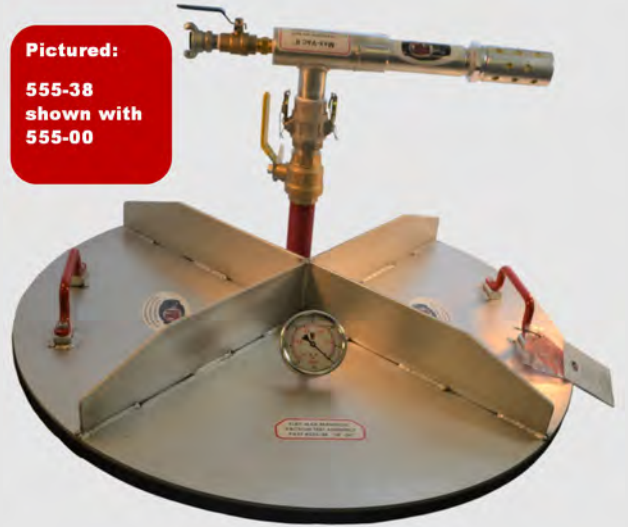
- ◆ Our Cam-Lock® connection makes attaching the Max-Vac™ II (venturi pump) to the Bladder-Max™ quick and secure. The Max-Vac™ II doesn't wobble around on top of the Bladder-Max like other connections (ie crowsfoot/chicago).
- ◆ Our cross brace includes our easy slide design making adjusting the height of the cross brace quick and effortless. Our multiple pin placements allows the user to adjust the bladder placement to eleven different locations.
- ◆ Our bladder inflation assembly allows for easy inflation and deflation of the bladder.
- ◆ Gauges (vacuum test gauge and bladder inflation gauge) are angled up 45° to allow for easy reading from a safe distance.



# Manhole Vacuum Testing - Flat-Max™ with Cam-Lock® Connection

The Cam-Lock® connection allows for a easy, quick and secure connection between the Max-vac II and the Flat-Max™ assembly.

**Pictured:**  
555-38  
shown with  
555-00

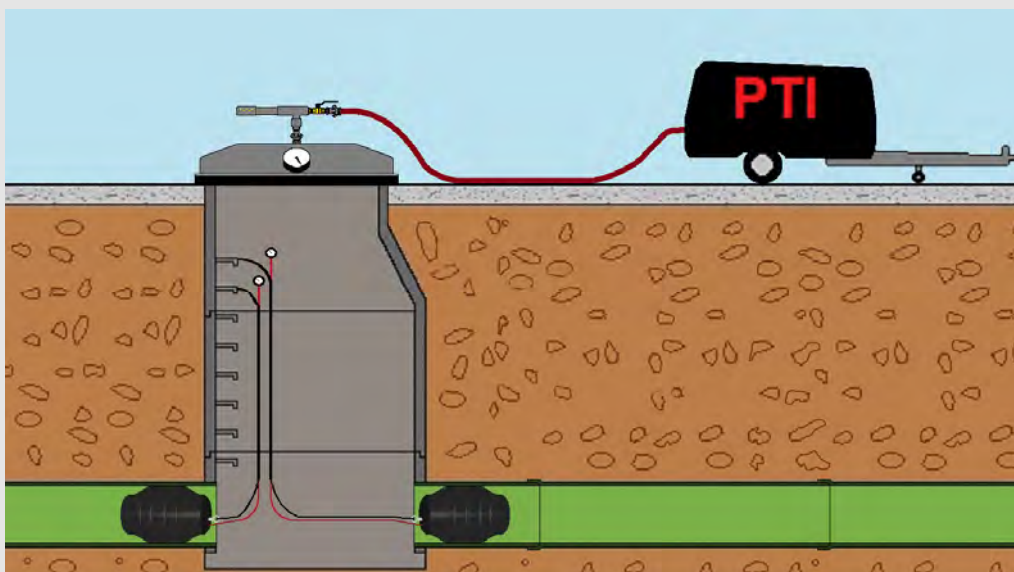


Flat-Max™ available in two sizes:

PN: 555-38 38" OD

PN: 555-44 44" OD

- ◆ Our 38" Flat-Max™ weighs 45 pounds and has two lifting handles allowing one person to perform a vacuum test.
- ◆ The Flat-Max™ features a large 4" dial Grade A liquid filled gauge that is angled up to allow for reading from a safe distance.
- ◆ Our 1" thick closed cell foam ensures consistent leak free seals. The Flat-Max™ can seal on both the manhole frame and manhole cone surfaces.
- ◆ Maximum size usage range allows you to seal manhole openings from 18"-36" (555-38) and 18"-42" (555-44).
- ◆ Max-Vac II Venturi Pump (sold separately) creates the vacuum needed to perform a manhole vacuum test.
- ◆ Cam-Lock® makes connecting the Max-Vac™ II Venturi Pump to the Flat-Max™ quick and secure.



Vacuum  
Testing  
Accessories



See Page 19

Caution: Stand clear of a Bladder-Max™ or Flat-Max™ vacuum head assembly while vacuum testing.

# Max-HD Fill Kits (Rope/Hose) 450 and 455 Series with Bend Resistant Sleeve and Gauge Tree (450 Series) and Removeable Gauge Tree (455 Series)

Our new Bend Restrictor Sleeve (plug inflation end) improves the hose's durability by preventing the hose from bending at the fitting and reducing the wear area.



Heavy Duty Natural Rubber Gauge Guardian™ protects the gauge from the hazardous construction environment.

**Perfect for your rental fleet!**

Swivel NPT Fitting: The plug end of the hose includes a swivel (M) NPT fitting. The swivel prevents the hose from getting twisted up in the manhole and allows the hose to be easily hard plumbed to the plug.

**3/8" Hydraulic Hose allows for faster inflation and deflation of larger plugs.**

Description	P/N	Weight	Length	Hose ID
20' Max-HD (3/8" Hydraulic Hose) Fill Kit/Retrieval Rope with Gauge	450-20	8 LBS	20'	3/8"
30' Max-HD (3/8" Hydraulic Hose) Fill Kit/Retrieval Rope with Gauge	450-30	10 Lbs	30'	3/8"
50' Max-HD (3/8" Hydraulic Hose) Fill Kit/Retrieval Rope with Gauge	450-50	15 Lbs	50'	3/8"
20' Max-HD (3/8" Hydraulic Hose) Fill Kit/Retrieval Rope with Removable Gauge	455-20	8 LBS	20'	3/8"
30' Max-HD (3/8" Hydraulic Hose) Fill Kit/Retrieval Rope with Removable Gauge	455-30	10 Lbs	30'	3/8"
50' Max-HD (3/8" Hydraulic Hose) Fill Kit/Retrieval Rope with Removable Gauge	455-50	15 Lbs	50'	3/8"

## 430 Series Fill Kit/Retrieval Rope (1/4" ID PVC Hose) with Liquid Filled Gauge

Description	Part #	Product Weight	Product Length
20' 430 Series Fill Kit (1/4" PVC Hose) / Retrieval Rope with Gauge	430-20	5 Lbs	20'
30' 430 Series Fill Kit (1/4" PVC Hose) / Retrieval Rope with Gauge	430-30	7 Lbs	30'
40' 430 Series Fill Kit (1/4" PVC Hose) / Retrieval Rope with Gauge	430-40	9 Lbs	40'

**Includes Gauge Tree and Industrial QD Fittings.**

This combination retrieval rope and inflation hose can be used to lift and lower plugs into and out of the manhole and has 1/4" ID PVC hose for inflating and deflating plugs from outside of the danger zone.

The polypropylene rope has a 3,000 lbs tensile strength which protects the fill line from being damaged during the installation of your plugs.

The snap hook makes it easy to attach and detach the retrieval rope from the plug.

The 430 series includes a gauge tree consisting of a 0-60 PSI liquid filled gauge with snubber, a tank valve (tire valve) and a 1/4" quick dump valve.

**Perfect  
for plugs  
up to  
12"-18"!**



## 410 (swivel ball) and 420 Series (Quick Disconnect) Fill Kit/Retrieval Rope (1/4" ID PVC Hose) Without Gauge



**410 Series with Swivel Ball Fittings**



**420 Series with Quick Disconnect Fittings**



**100-08 with 410-20**

**Great for single size plugs!**

Description	Part #	Product Weight	Product Length
20' 420 Series Fill Kit (1/4" PVC Hose) / Retrieval Rope without Gauge with Industrial Quick Coupler	420-20	4 lbs	20'
30' 420 Series Fill Kit (1/4" PVC Hose) / Retrieval Rope without Gauge with Industrial Quick Coupler	420-30	5.5 lbs	30'
40' 420 Series Fill Kit (1/4" PVC Hose) / Retrieval Rope without Gauge with Industrial Quick Coupler	420-40	7 lbs	40'
20' 410 Series Fill Kit (1/4" PVC Hose) / Retrieval Rope without Gauge with Swivel Ball Fittings	410-20	4 lbs	20'
30' 410 Series Fill Kit (1/4" PVC Hose) / Retrieval Rope without Gauge with Swivel Ball Fittings	410-30	5.5 lbs	30'
40' 410 Series Fill Kit (1/4" PVC Hose) / Retrieval Rope without Gauge with Swivel Ball Fittings	410-40	7 lbs	40'

# Parts and Accessories



**PN: 37-001**

0-60 PSI Liquid Filled Gauge  
(gauge only) used with all Fill Kits.



**PN: 37-011**

0-60 PSI Liquid Filled Gauge with Gauge  
Guardian used with all Fill Kits with  
Gauges.



**PN: 37-012**

Gauge Guardian used to  
protect Gauges (4" " Dial).



**PN: 37-010**

Gauge Guardian used to protect the  
0-60PSI gauge (2.5" Dial) used with all Fill  
Kits.



**PN: 37-031**

Max-Guard™ relief valve 12"-18" and  
12"-24" (Plugsters and Testers) Plugs.



**PN: 65-074**

Max-Guard™ relief valve (15"-30" and  
larger plugs).



**PN: 55-075**

Max-Guard™ Rubber Debris Cover  
Large (15"-30" and larger plugs).



**PN: 55-070**

Max-Guard™ Rubber Debris Cover Large  
(12"-18" and 12"-24" ) (Plugster and  
Tester plugs).



**PN: 50-010**

Nipple Cap—Black  
(10 Pack).



**PN: 02-025**

Max-Guard Removal Tool Socket  
(15"-30" and larger plugs).



**PN: 32-001**

1/8" Schrader Valve (Tank or Tire)  
used on plugs with 1/8" inflation port.



**PN: 32-002**

1/4" Schrader Valve (Tank or Tire) used  
on plugs with 1/4" inflation port.



**PN: 33-008**

Nipple QD Industrial x 1/4" (Male) NPT.



**PN: 33-007**

Nipple QD Industrial x 1/4" (Female)  
NPT.



**PN: 33-012**

Nipple QD Industrial x 1/8"(Male) NPT.



**PN: 32-003**

Brass Cross 1/4" (Female) NPT used to  
assemble gauge tree on Fill Kits.

# Parts and Accessories



**PN: 33-005**

Quick Coupler (socket) 1/4" (Male) NPT used on Fill Kits (rope/hose) 430 and 440 Series Fill Kits.



**PN: 32-007**

3/4" (M) NPT Cored Hex Head Plug. Used to block the 3/4" bypass port on the 225 Series (Tester) plugs..



**PN: 37-021**

1/4" Dump Valve (ball valve) used on all Fill Kits with a gauge.



**PN: 30-011**

1/4" Eye Bolt used on plug 3"-4" , 4"-6" and 4"-8" Plugsters, Testers and Guzzlers.



**PN: 31-014**

1/4" x 1-1/8" Galvanized Shackel used on Max-Guzzlers 6"-10" up to 12"-24".



**PN: 33-011**

3/4" Foster Nipple x 3/4" (Male) NPT used on the 225 Series Tester plugs to connect the test port (blue) to the 3/4" (female) Foster coupler on the triple hose (blue).



**PN: 33-006**

Quick Coupler (socket) 1/4" (F) NPT used on 450 Series Fill Kits (rope/hose).



**PN: 32-005**

1/4" (M) NPT Cored Hex Head Plug. Used to block the 1/4" bypass port on the 225 Series (Tester) plugs.



**PN: 30-010**

3/8" Eye Bolt used on 6"-10" up to 12"-24" Plugsters and Testers and 8"-12" 250 Series (Guzzler) Plugs and 8",10" and 12" single size plugs.



**PN: 30-012**

1/2" Eye Bolt used on all plugs (15"-30" and larger).



**PN: 33-004**

1/2" Foster Nipple x 1/2" (Male) NPT used on the control panel to connect the 1/2" test port (blue) to the 1/2" Foster coupler on the triple Hose (blue).



**PN: 33-002**

3/4" (M) NPT x Chicago (crowsfoot) coupler used on Max-Vac Venturi Pump (air compressor supply).



**PN: 33-001**

1/2" (M) NPT x Chicago (crowsfoot) coupler used on the inlet air port on the control panel.

# Parts and Accessories



**PN: 37-025**

Air regulator for air test control panel includes mounting nut.



**PN: 37-014**

0-15 PSI liquid filled gauge 4" dial, back mount, 1/4" (M) NPT for the air test control panel.



**PN: 37-007**

0-60 PSI liquid filled gauge 2.5" dial, back mount, 1/4" (M) NPT, for the air test control panel.



**PN: 37-018**

0-15 PSI liquid filled gauge, 4" dial, bottom mount, 1/4" (M) NPT .



**PN: 525-00**

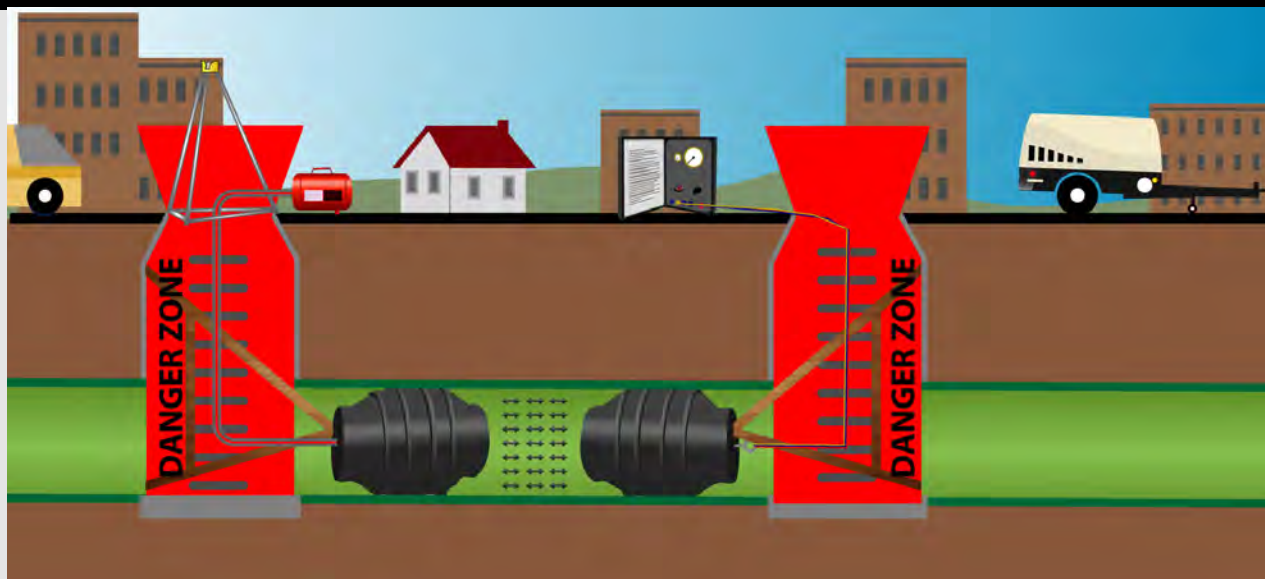
Max-Pro™ Parts Organizer.



**PN: 575-50**

Gauge Testing Fixture used to test gauges on Fill Kits and Test Panels.

# Technical Data—Danger Zone



## Danger Zone:

A pipe plug's danger zone is a funnel shaped area directly in front of an inflated pipe plug. This danger zone also includes a funnel shaped area coming out of the manhole where an inflated pipe plug is installed. The entire manhole should also be considered to be in the danger zone and users should **NEVER** be in a manhole containing an inflated pipe plug.

# Technical Data

## Conversion Table

Convert From Unit	Multiply By	Convert to Unit
PSI (Pounds per Square Inch)	2.307	Feet of Head
Feet of Head	0.4335	PSI (Pounds per Square Inch)
Inches of Mercury	0.4912	PSI (Pounds per Square Inch)
PSI (Pounds per Square Inch)	2.036	Inches of Mercury
Bars	14.5	PSI (Pounds per Square Inch)
PSI (Pounds per Square Inch)	0.0689	Bar
Inches	0.03937	Millimeters
Millimeters	25.4	Inches
Feet	0.3048	Meters
Meters	3.281	Feet

## Pressure Conversion Table - PSI to Feet

Feet of Head =	PSI	Feet of Head =	PSI	Feet of Head =	PSI
1 =	0.43	16 =	6.94	31 =	13.44
2 =	0.87	17 =	7.37	32 =	13.87
3 =	1.30	18 =	7.80	33 =	14.31
4 =	1.73	19 =	8.24	34 =	14.74
5 =	2.17	20 =	8.67	35 =	15.17
6 =	2.60	21 =	9.10	36 =	15.61
7 =	3.03	22 =	9.54	37 =	16.04
8 =	3.47	23 =	9.97	38 =	16.47
9 =	3.90	24 =	10.40	39 =	16.91
10 =	4.34	25 =	10.84	40 =	17.34
11 =	4.77	26 =	11.27	41 =	17.77
12 =	5.20	27 =	11.70	42 =	18.21
13 =	5.64	28 =	12.14	43 =	18.64
14 =	6.07	29 =	12.57	44 =	19.07
15 =	6.50	30 =	13.01	45 =	19.51

## Back Pressure/Feet of Head

**Back Pressure defined:** Back pressure is the amount of air or water that is built up behind (or in front of) a pipe plug.

**Feet of Head or Head Pressure defined:** The depth of the water from the centerline of the plug to the water's surface.

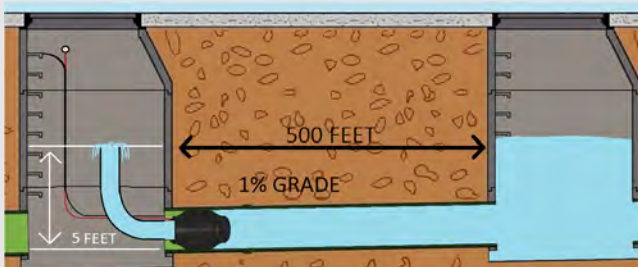
**Calculating feet of head by using the slope or grade of the pipe:**

In order to calculate the feet of head/head pressure that is backing up behind a pipe plug you must know the grade or slope of the pipe and the distance the water is backing up behind the plug.

**Grade or Slope Defined:** The percentage the pipe is slanted downward to allow the affluent to flow. Example: If the pipe is on a 1 % grade that means the pipe gradually slants downward at a rate of 1 foot every 100 feet of pipe.

**Calculating Feet of Head Example:** If a pipe is laid on a 1% grade and the water inside the pipe has backed up 500 feet behind the plug then the plug will be holding back five feet of head.

**Example (Showing the Math) :** The number of feet the water is backed up in the pipe behind the plug equals 500 Ft multiplied by the slope or grade. In this case equals 1% or .01 = (500 x .01 = 5 feet of head) Every additional 100 feet the water backs up would add one additional foot of head to the back pressure.



**Pounds of Force Defined:** The amount of force being exerted on a pipe plug (back pressure).

**Formula:**  $\pi (3.14) \times (\text{radius of pipe}^2) = \text{square inches or area of the pipe. Multiply the square inches by PSI (back pressure) = Pounds of Force.}$

**Why is it important?** It is important to understand the pounds of force that a plug is holding back to help you understand the amount of damage/danger that can be caused if a pipe plug fails or deflates. This also helps in developing or designing a proper blocking or bracing strategy.

**Example:** If a plug is installed in an eight inch pipe and the plug is holding back five psi of air pressure how much force is the plug holding back?

1. Calculate the surface area of 8" pipe using formula  $\pi r^2$ .

$$3.14 (PI) \times 4(\text{pipe radius})^2$$

$$3.14 \times (4 \times 4) 16 = 50.24 \text{ Square Inches}$$

2. Multiply the back pressure (PSI) x Square Inches

$$5 (\text{psi}) \times 50.24 = 251.20 \text{ Pounds of Force}$$

**Distributed By:**



**Plug Technologies, Inc.**

11099 Lamont Ave NE | Hanover, MN 55341

855-758-4489 | [www.plugtechinc.com](http://www.plugtechinc.com)



Scan to visit our website

---

**Southwest Distribution Warehouse/WSR**

700 N. Golden Key St. (Suite A5) | Gilbert, AZ 85233

**Southeast Distribution Warehouse**

Marsh and Moore

3380 Agricultural Center Drive | St. Augustine, FL 32092

**Product Catalog**

Revised February 2021